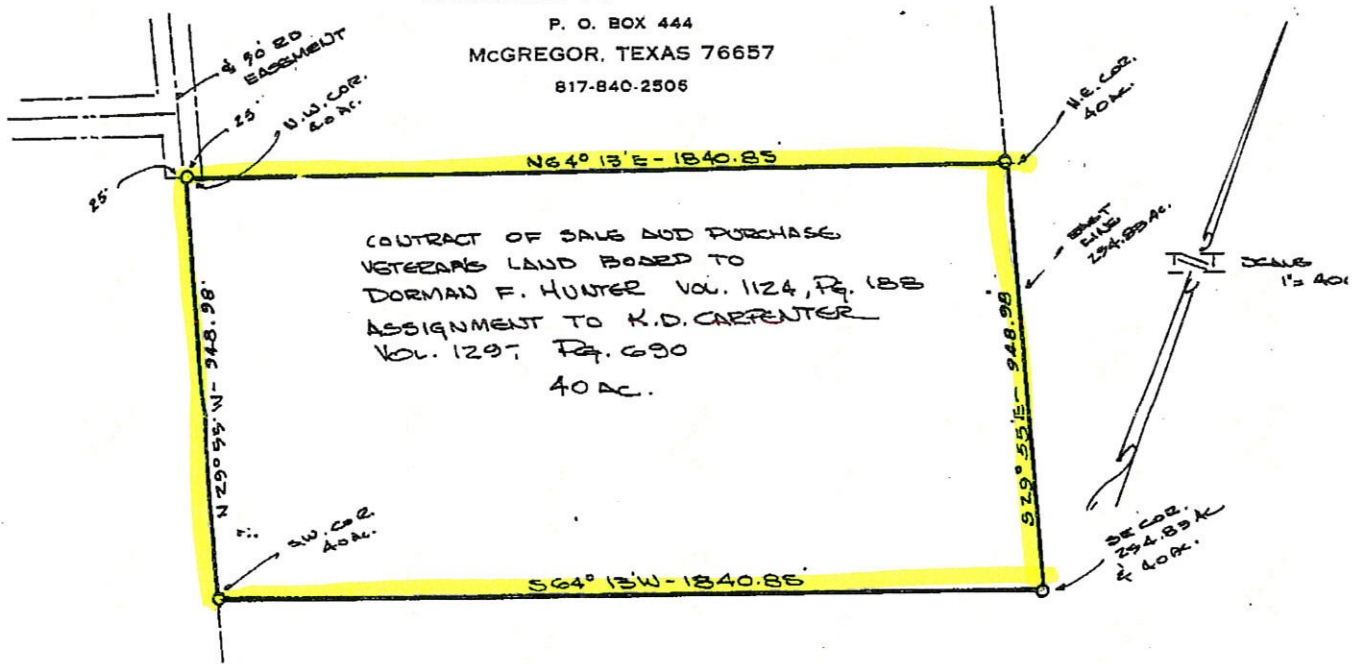


# KITIRELL & ASSOCIATES

REGISTERED PUBLIC SURVEYORS

P. O. BOX 444  
 MCGREGOR, TEXAS 76657  
 817-840-2505



Fieldnotes for a 40.0 acre tract of land out of the J. H. Blunt Survey, Abstract No. 131 in McLennan County, Texas, and being a part of that certain 254.83 acre tract of land conveyed to O. F. Jones, Jr. deed recorded in Vol. 672, Page 200 of the McLennan County, Texas Deed Records, and being that same 40 acre tract of land described in assignment of contract of sale and purchase to K. D. Carpenter, Vol.1297, Page 690 of the said deed records.

Beginning at an iron pin at the S. E. corner of the said 254.83 acre tract for the S. E. corner of this, at the S. E. corner of the said 40 acre tract.

Thence S 64° 13' W 1840.85 feet, with the South line of said 254.33 acre tract to an iron pin at its inside ell corner for the S. W. corner of this, at the S. W. corner of the said 40 acre tract.

Thence N 29° 55' W 948.98 feet to an iron pin for the N. W. corner of this, at the N. W. corner of the said 40 acre tract.

Thence N 64° 13' E 1840.85 feet, to an iron pin in the East line of said 254.83 acre tract for the N. E. corner of this, at the N. E. corner of the said 40 acre tract.

Thence S 29° 55' E 948.98 feet, with the East line of said 254.83 acre tract, the East line of the said 40 acre tract to the place of beginning.



Surveyed February 9, 1980  
 Kittrell & Associates

*B. W. Kittrell*

B. W. Kittrell  
 Registered Public Surveyor # 660